

# Sexuality Education for Disadvantaged Young People in Secure Care

BY HARLEY KAIHE-KATTERNS

# Auckland Child, Youth and Family Care and Protection Residence

- ▶ 24-hour safe and secure care
- ▶ 20 young people aged 10-16years
- ▶ Providing the best possible opportunities to improve their life outcomes
- ▶ Evidence based programmes
- ▶ Assessments to meet individual needs
- ▶ Educational provider based on site
- ▶ A comprehensive plan to transition young people back into the community

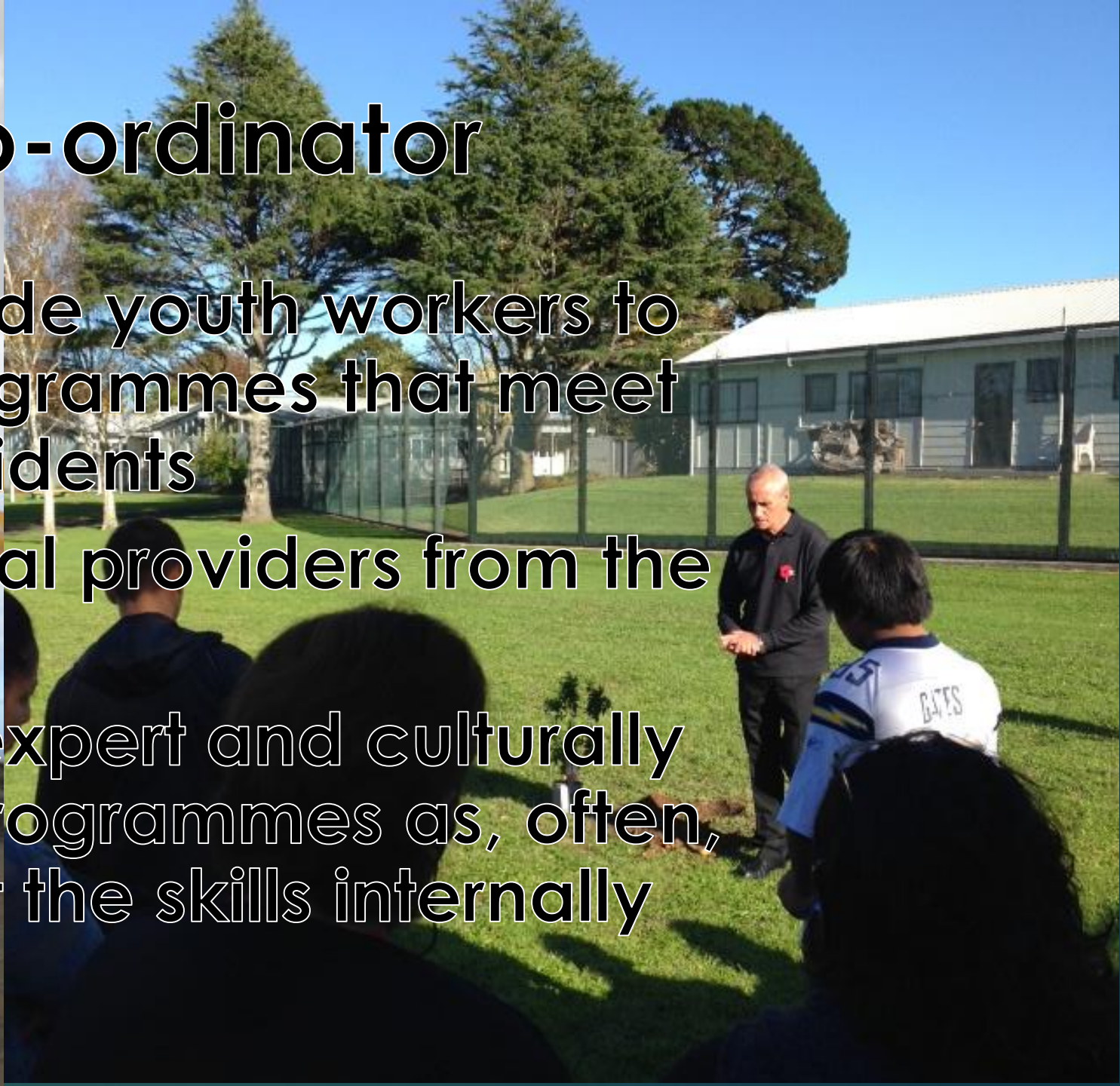
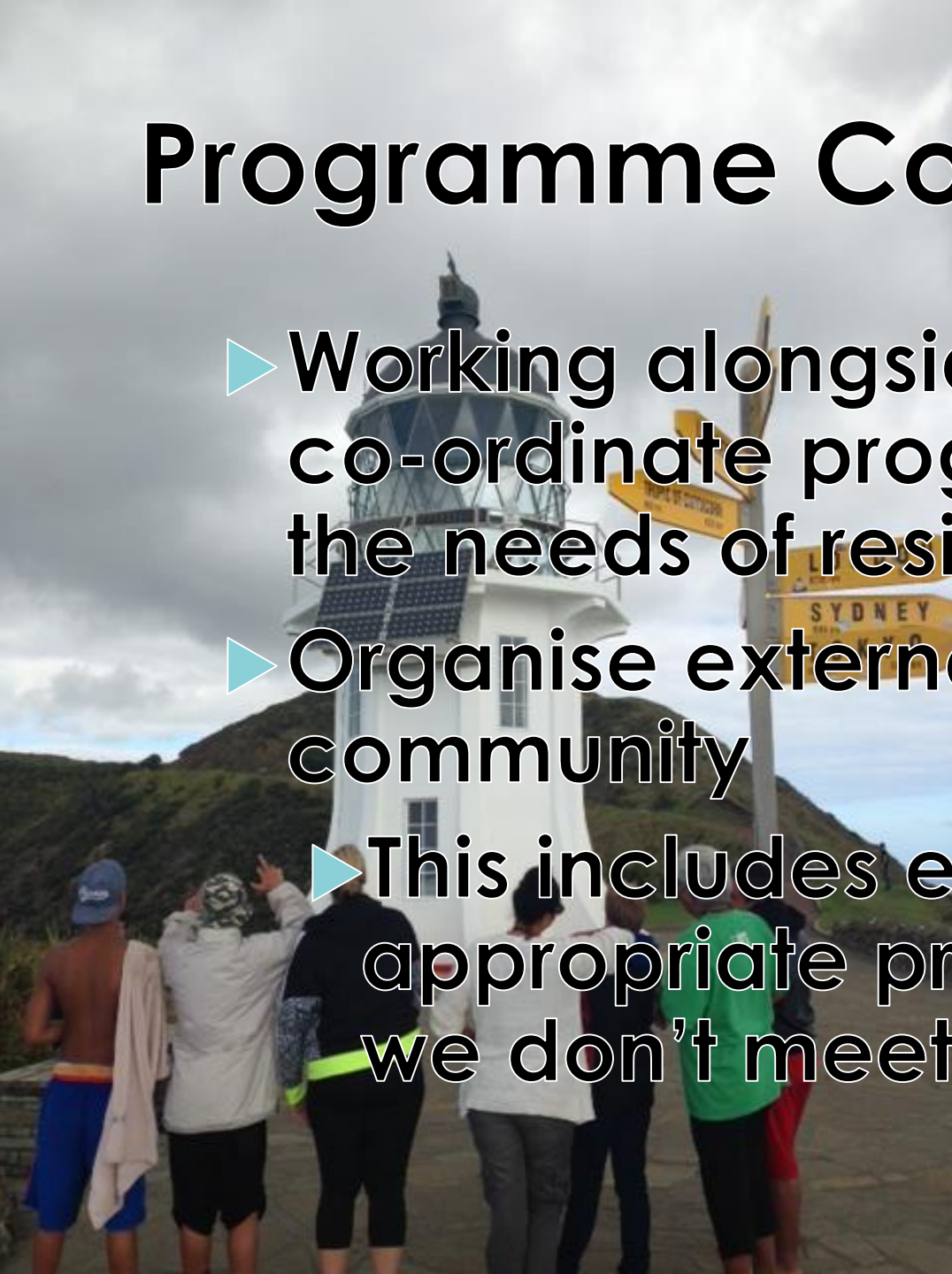
# Sexual health for young people in secure facilities

- Young people with severe abuse, trauma or neglect
- Families ill-equipped to educate
- Young people who more than likely have not attended formal education
- Information gathered is lacking substance and quality
- Young people in general do not receive adequate sexual health education
- More important for young people in residential care due to their antisocial behaviours



# Programme Co-ordinator

- ▶ Working alongside youth workers to co-ordinate programmes that meet the needs of residents
- ▶ Organise external providers from the community
- ▶ This includes expert and culturally appropriate programmes as, often, we don't meet the skills internally



# Sexual Health

- ▶ In the Auckland area there are several sexual health providers
- ▶ Each provider lends a different facet to a holistic approach
- ▶ External sexual health providers are;
  - ▶ Family Planning relationships and communication
  - ▶ Body Safe – sexual violence
  - ▶ Te Kaha o te Rangatahi – Maori provider sexual and reproductive health education



# Lessons Learnt

- ▶ **Outside sexual health providers create a conducive environment to learn**
- ▶ **It is difficult for young people to discuss sexual health as they are still discovering and exploring their own sexuality**
- ▶ **Providers discuss taboo topics, address myths and empower young people**
- ▶ **There is a need for more emphasis on sexual health in secure residential care**

# Te Kaha o te Rangatahi

- They offer a Maori perspective that is engaging for Maori youth
- Can relate better to young people at a cultural level
- Have a holistic and cultural view that adds value to the learning









# Next Steps

- ▶ Highlight and bring attention to young people in residential care to get adequate sexual health education
- ▶ Young people to make educated and informed decisions
- ▶ Ideal to further assess and provide a case study to the ministry to improve sexual health education in secure residential care

**Nga mihi nui ki a koutou katoa**