

SEXUAL HEALTH SOCIETY

Hidden Depths Conference 2015

MINISTRY OF HEALTH UPDATE

Jo Elvidge

**Principal Advisor, Sexual and Reproductive
Health, Ministry of Health**

Across the Ministry

Strengthening practice

Legislation

New Reports

Sexual violence and pornography

Conception and contraception

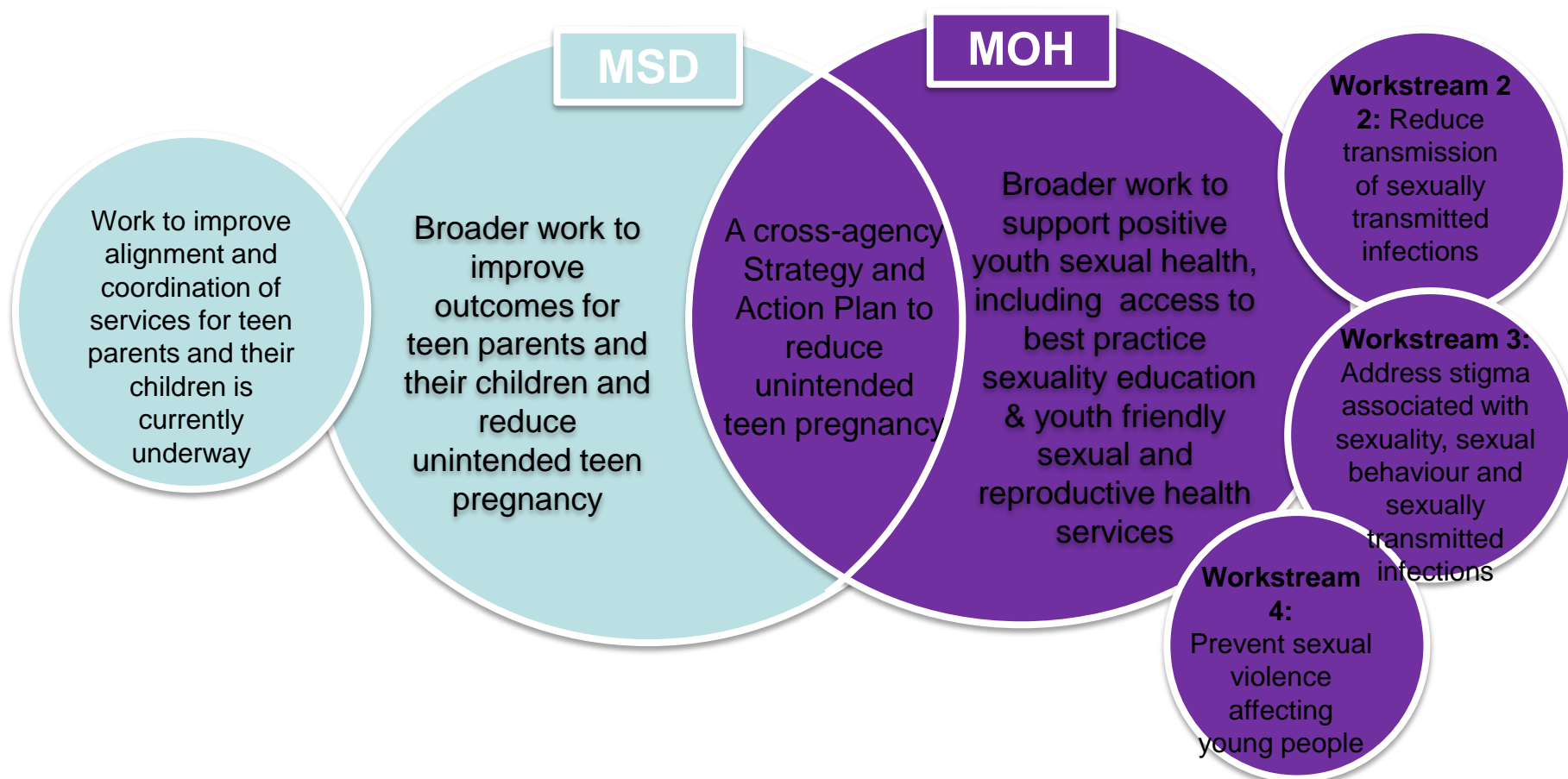
Finding my feet



The 'Virtual Team'

	National Health Board	Policy	Sector Capability (SCI)	Clinical Leadership CLPR
DDG	Michael Hundelby	Teresa Wall	Cathy O'Malley	Don Mackie
Steering group	Grant Pollard (chair) + Manaia King	Tanya Roth	Kate Chong	Grant Storey + Andrea McNeill
	Group Manager + Chronic Diseases Manager Public Health,	Manager Family and Community Policy	Manager Child & Family Programmes	Principal Technical Specialist Senior Advisor Communicable Diseases,
Working group	Jo Elvidge Ngaire Sandel	Sonya Hogan (fixed term)	Emily Russell	Janine Ryland
	Principal Advisor Sexual and Reproductive Health + Issues lead Sexual Health	Project Manager	Senior Advisor Youth Health	Clinical Advisor, Child and Youth Health

Purpose and policy context



SUPPORTING YOUNG PEOPLE to TAKE CHARGE of their SEXUAL and REPRODUCTIVE HEALTH

- social attitudes to teenage sexuality
- comprehensive sexuality education
- youth-friendly sexual and reproductive health services
- pathway to education and employment – life goals



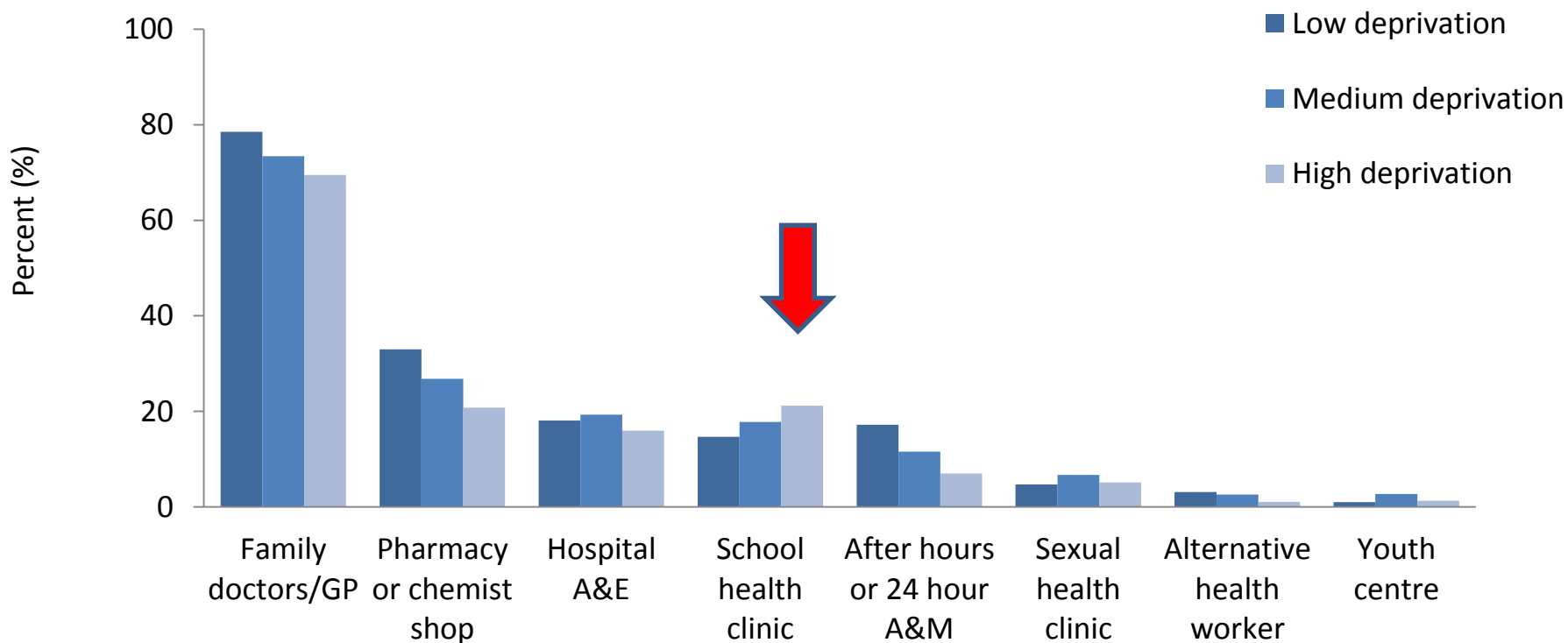
Findings from consultation with MYD Maori Pacific and other young people and teen parents

- Negative attitudes to sexually active teens
- Sexuality education focussed on bio medical facts
- Managing emotional side of sex.
- Information from friends + online
- Fun engaging, relatable and immediate info
- Health services –trust, confidentiality, visibility, support emotional health needs around STIs and contraception

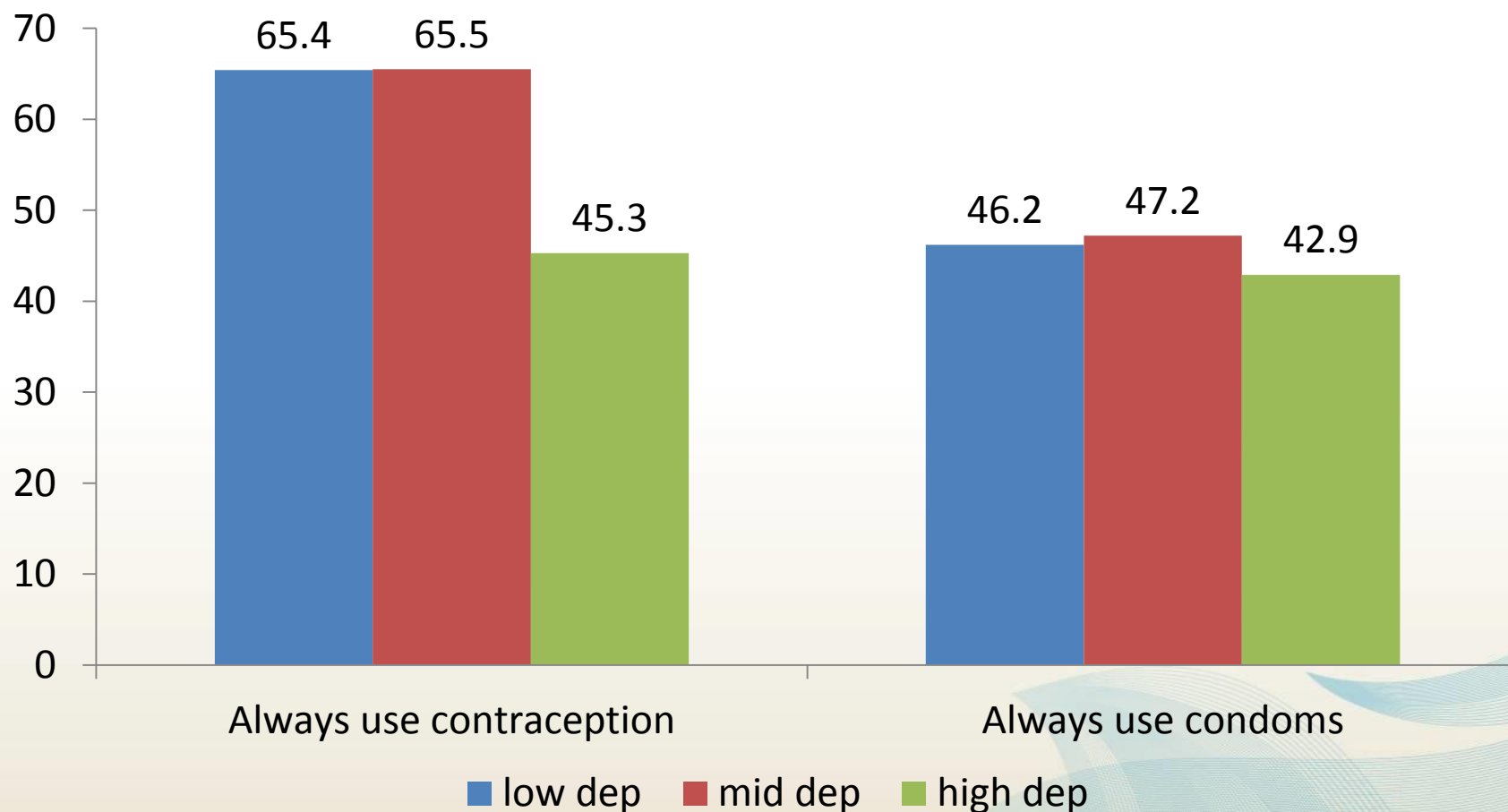


Access to healthcare

22% reported they were unable to access healthcare they had needed

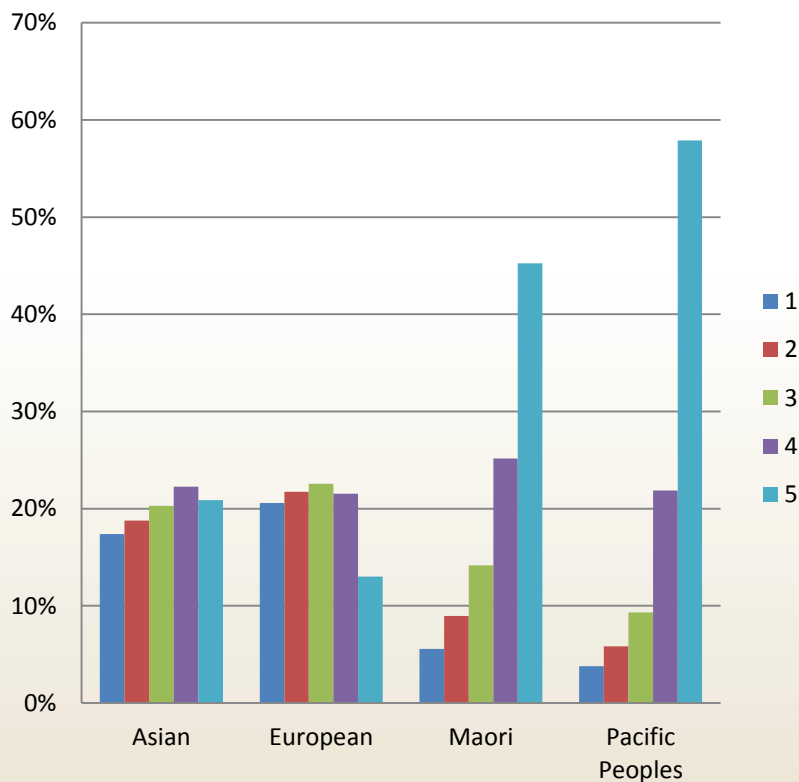


Deprivation and sexual health outcomes

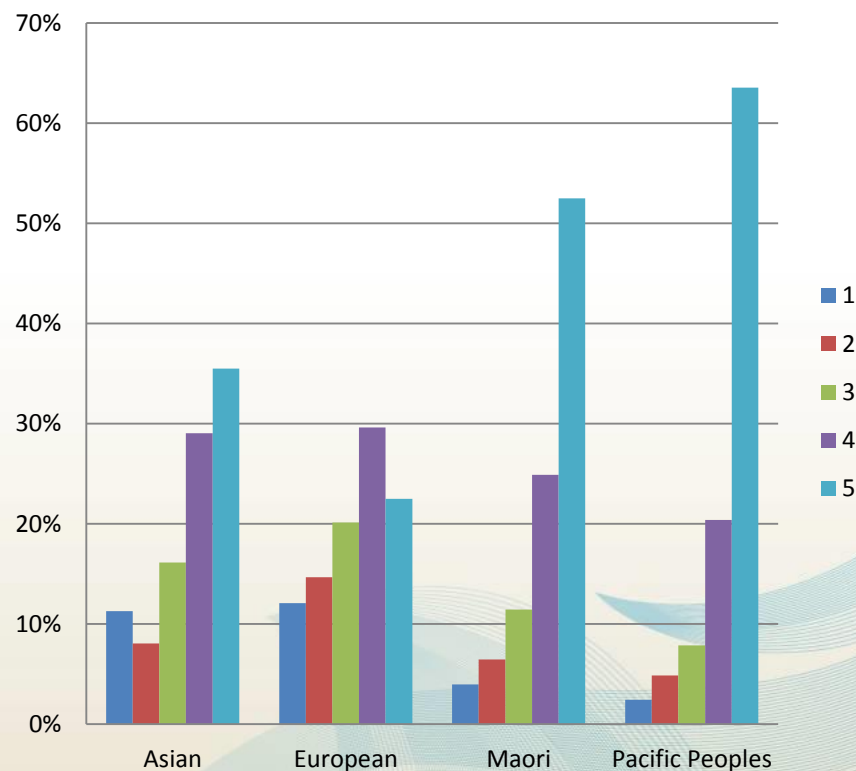


Births by deprivation and ethnicity

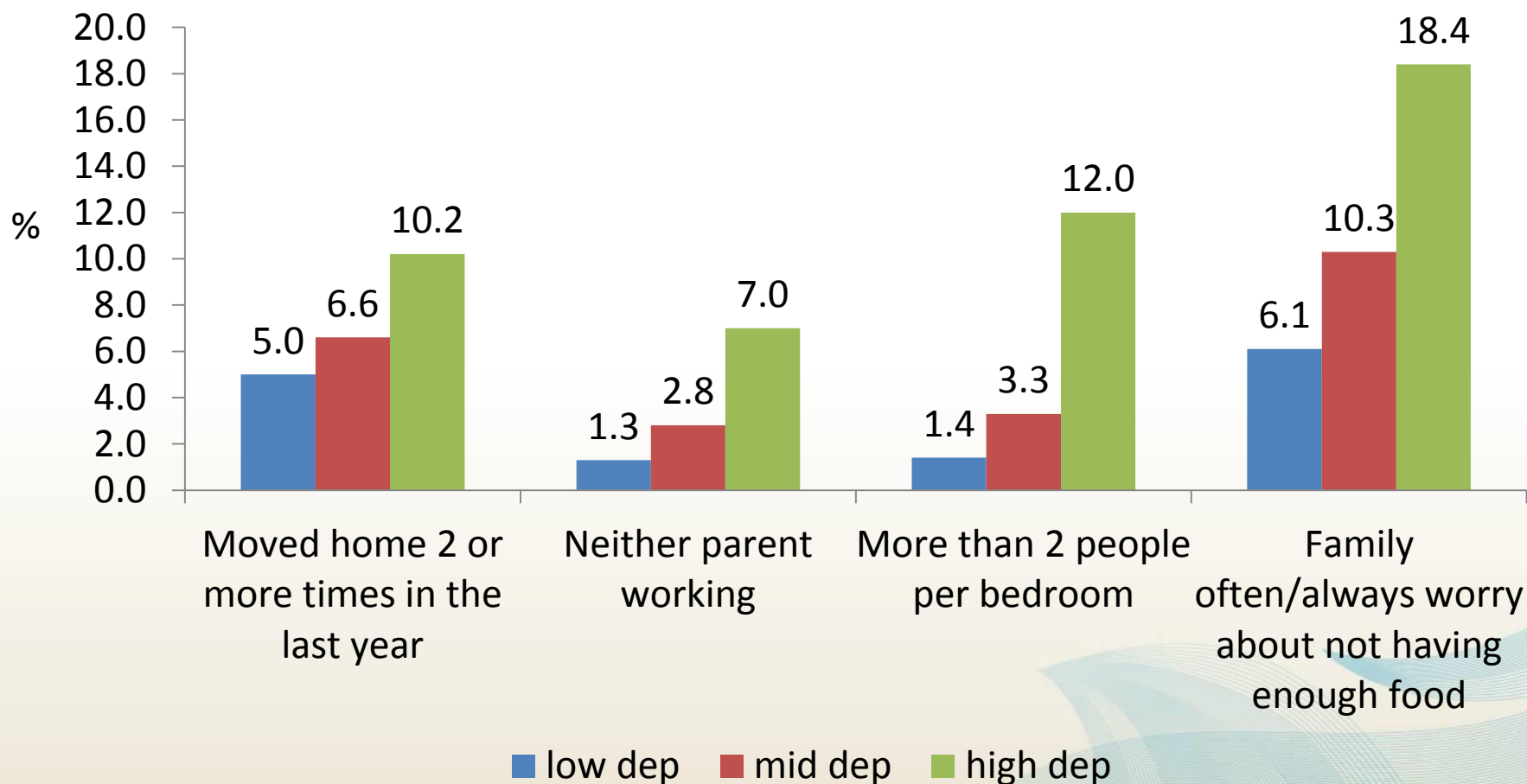
Dep profile, all births by mother ethnicity, 2012



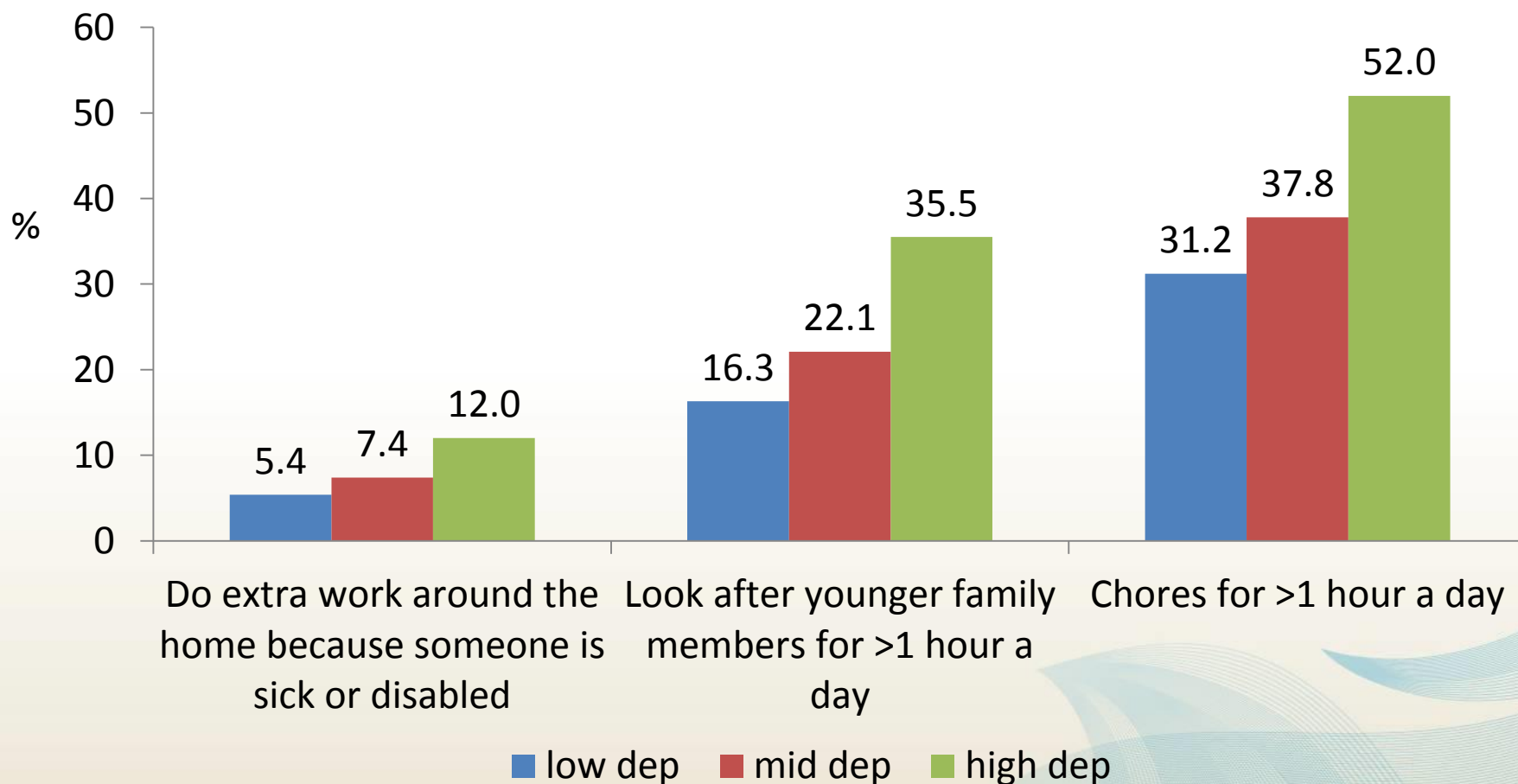
Dep profile, teen births by mother ethnicity, 2012



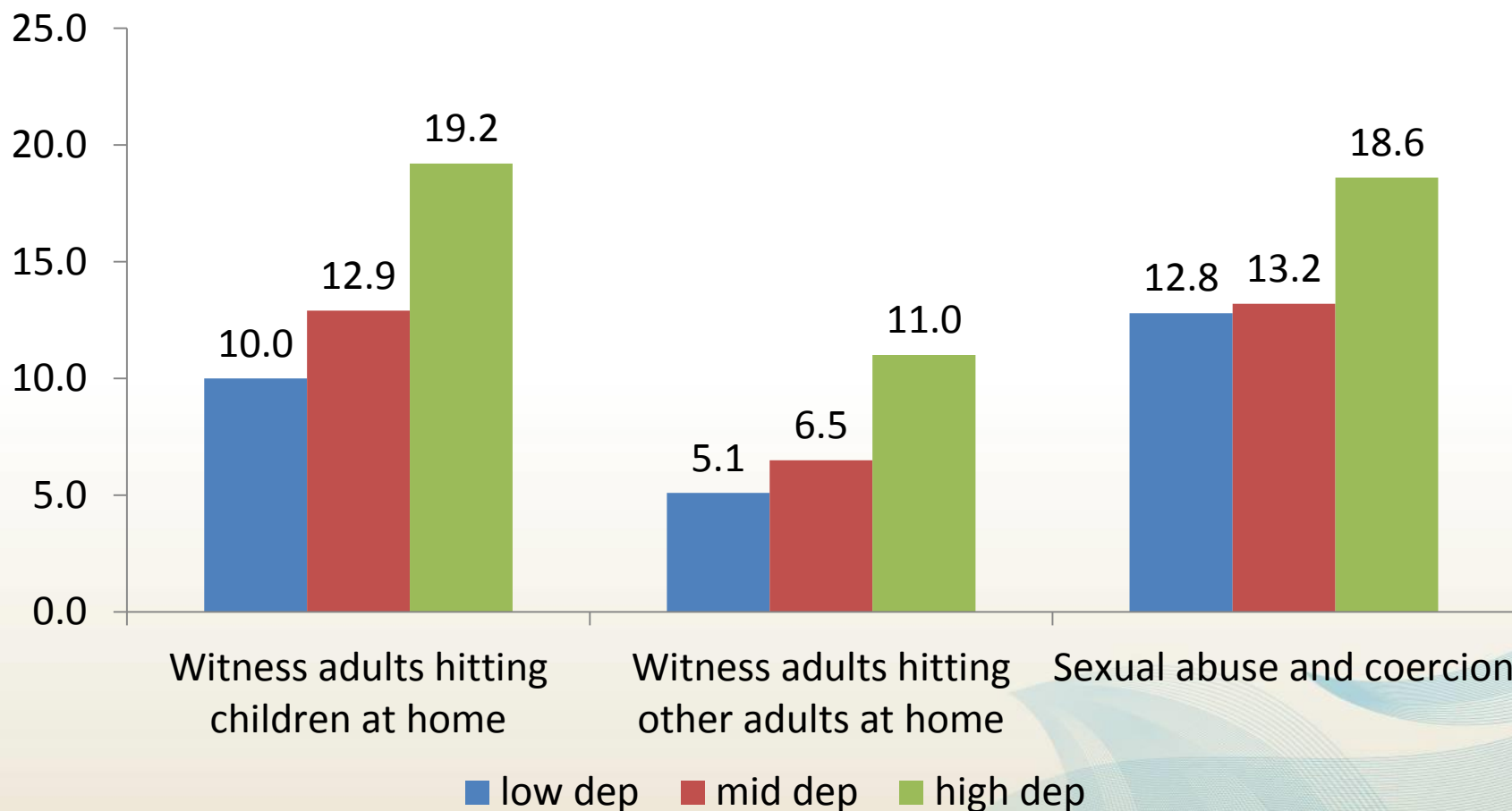
Conditions where young people live – **Home**



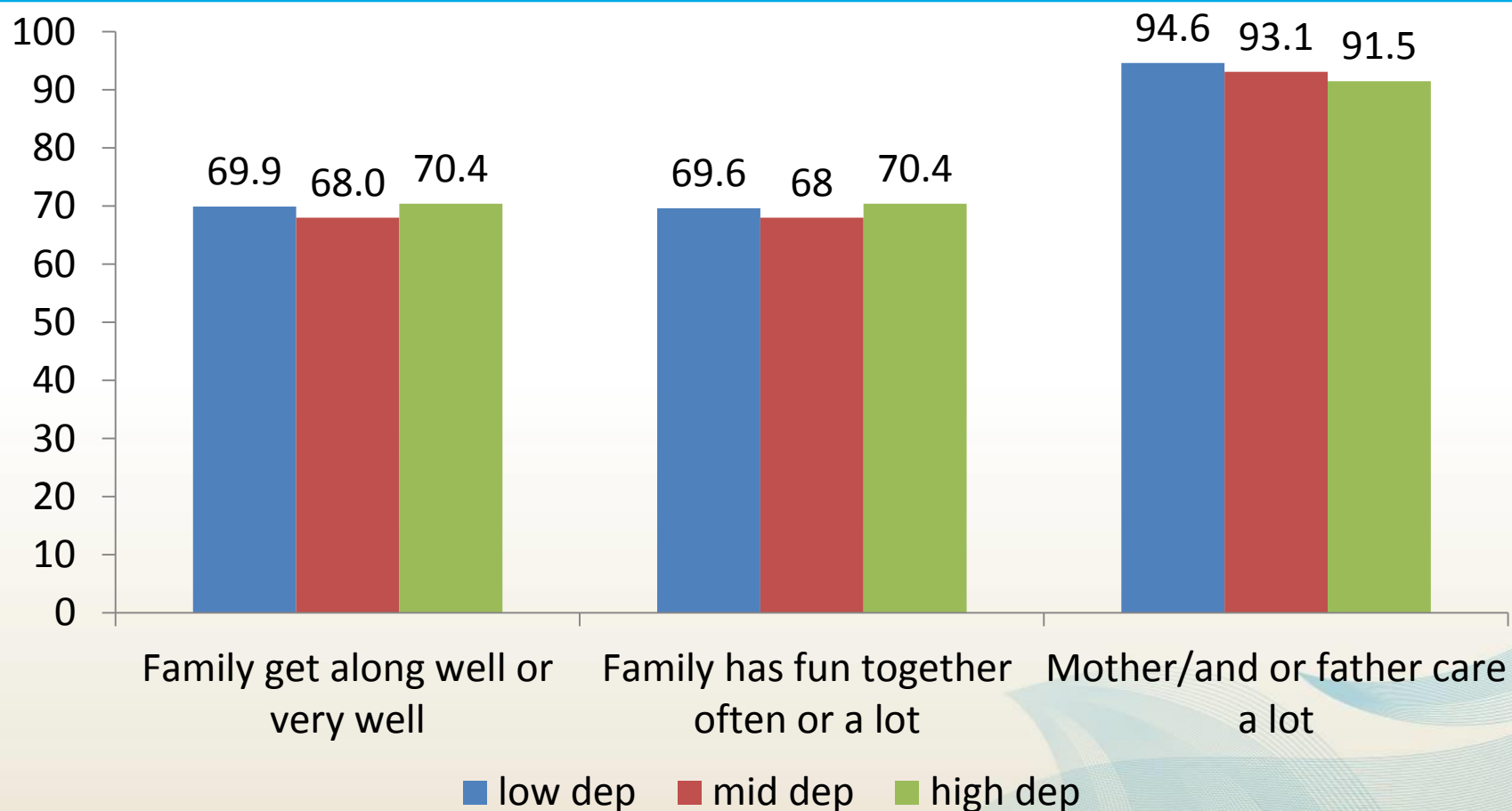
Conditions where young people live – **Home**



Conditions where young people live - **Violence**



Conditions where young people grow – **Family**



Porn informed sexual health care

11% of boys and 2% of girls viewed porn weekly both for Sexual stimulation and learning how to be a good lover -particularly for boys

- Pornography watching was inversely gendered in a sample of 853 young men and women (av.age 28) (Braun 2012).
 - A meta analysis of top rating US porn videos found the following with 94% of violence directed at women.
 - Masterton and Lewis 2014 UK research with 130 16-18 year olds found unsafe anal sex was reported as normative, as a marker of sexual achievement for boys, and physically painful and a reputation risk for girls. Girls taking semi or naked photos for sending to boys was a marker of commitment.
 - School nurses clinicians from girls about practices they felt pressured to undertake e.g. anal sex, strangulation, ejaculating on the face
-

SRH Plan

Vision

Process

Timeline

Outputs

* Courage * Creativity *
* Collaboration * Persistence *

